



Chris Betty
- Principal

Upcoming events Take Waaheke

New Students Day -
Monday 2 February

Whole School Starts -
Tuesday 3 February

Timetable Starts -
Wednesday 4 February

Waitangi Day(Public Holiday) -
Friday 6 February

SEE BACK PAGE FOR A
TERM 1 2026 CALENDAR



Tāne Mahuta

In Māori mythology, Tāne
(also called Tāne-mahuta) is
the god of forests and birds.
Tāne Mahuta stands tall and
strong!

Welcome back for 2026!
Nau mai hoki mai ki te tau 2026!

Koorero a te Tumuaki The Principal speaks:

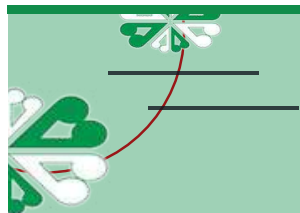
Kia ora koutou katoa! A warm and hearty welcome to the new year and a new start. I hope that you all had a relaxing, rejuvenating break and that you are recharged and ready to achieve the very best in all things in 2026.

This e-Bulletin includes key information about the school for 2026. It is important that you read through this information carefully. All other key information can be found on our website at <https://www.tuakaucollege.com/key-information>, including the Fees Schedule and Tools for Learning Lists (stationery).

Of note are some changes to the bus area/Elizabeth Street entrance to the school in 2026. There is more information about this in this e-Bulletin and an email was sent to parents/caregivers about this at the end of 2025. Change is not always a smooth transition so please be understanding as the community and school adjusts to changes to the bus bay. We are very excited to see works start on our new 6 classroom block!

Congratulations to all the students who sat NCEA in 2025! The results indicate all the hard work you completed last year and we are so proud of you all. We encourage you to keep working hard this year and to strive to do even better in 2026.

We look forward to having all our students return to the college and welcome all our new students! I also look forward to my last 9 weeks as Principal as we transition to your new Principal, Donna Tupaea. *Chris Betty*



Tuakau College 2026 Start Dates

Thursday 22 January	Student Centre, Reception and Accounts Office open.
Monday 26 January	Auckland Anniversary (Public Holiday)
Thursday 29 January	Course Confirmation for Year 12 and Year 13 students will occur from 10:30am - 3:30pm in the iHub. Please be patient during this time.
Friday 30 January	Course Confirmation for Year 11 students will occur from 10:30am - 3:30pm in the iHub. Please be patient during this time.
Monday 2 February	<p>New Students Pōwhiri/Orientation. New students pōwhiri and orientation from 9am - 1pm. Arrive to school at 9am and go to D Block. All students to be in correct uniform. Year 12 and Year 13 students to meet in the gym at 9am. Day finishes at 1pm. Parents/caregivers are welcome at the Pōwhiri at 9am and the BBQ lunch at 1pm. PARKING FOR POWHIRI: Please use Buckland Road for parking. Parking will be available on the field behind the Gym - follow the parking attendants directions.</p> <p>School bus service starts. PLEASE NOTE: Buses will run at normal school times (eg. pick up at 3:15pm).</p>
Tuesday 3 February	Whole school starts. All students arrive at school at 8:50am for a 9am whole school assembly. All students to be in correct uniform and to bring a pen - no other stationery required. Please ensure you have your PE uniform, <u>hat</u> , <u>sunscreen</u> and <u>water bottle</u> for the Whaanau House Rounders competition in the afternoon.
Wednesday 4 February	Timetable starts. Stationery is required.
Friday 6 February	Waitangi Day (Public Holiday)

All other Key Information for 2026 (including Tools For Learning Lists, Fees Schedule and more) can be found on the Tuakau College website (www.tuakaucollege.com) under the 'Key Information' tab.

We look forward to seeing you!



A little bit About Tuakau College



TUAKAU/TŪĀKAU (Two-a-coe) meaning:

Today, in many publications, Tuakau is written as TŪĀKAU. The source of this interpretation is from the NZ History archives. The interpretation is 'Tuu Aakau' (Tūākau.) 'Tū' - to stand; ākau - river bank shore. So it means to stand on the river bank. Tuakau College is part of North Waikato and is affiliated to Tainui and the kīngitanga movement. Kuiini Nga wai hono i te po is presently the Māori Queen residing at Tūrangawaewae Ngāruawāhia. Taupiri is te maunga (the mountain), Waikato te Awa (the river), Tūrangawaewae te marae. Tainui is our waka and Waikato is our iwi (the tribe). Tainui use double vowels instead of macrons so Māori becomes Maaori.

KO WAI TĀTOU: Who are we?

Over the past years Tuakau College has developed into a modern learning environment which has strengthened and continued to value and enhance things Maaori. Maaoritanga is part of what we do at Tuakau College. What we do is called the Tuakau College Culture or Kawa. Treaty of Waitangi obligations ensure that we continue to recognise and provide a context for all our students, especially our Maaori students.

Our kawa has been a strength of the College since the foundations were laid down by the first Principal, Hiwi Tauroa. He was a visionary leader and the practical steps he put in place towards the school becoming bicultural were implemented before the school opened in 1974. This ensured we followed certain protocols under a cultural umbrella which we cherish, relish and build on as we move forward.

Tuakau College is culturally rich. We have become multi-cultural with students from many ethnicities and cultural backgrounds. We cherish the enriched culture we are getting in our school. Throughout the year we celebrate the different cultures and traditions, not only Aotearoa culture but cultures of all students.



TUAKAU COLLEGE

Pai rawa atu i nga mea katoa | The very best in all things

LOGO and MOTTO

The logo depicts the fronds of the ponga tree which symbolise nurture, growth and new beginnings for a school relatively young. The larger fronds are the caregivers, staff and parents. The smaller fronds are the students developing and surrounded by the larger fronds for protection and support. The two colours reflect the dual heritage of New Zealand.

The motto "The very best in all things, Pai rawa atu i nga mea katoa," was created by Hiwi Tauroa, the founding Principal. He says "working well is not sufficient - we desire that you produce the very best work you are able to. We will demand the very best performance from each individual. Poor performance is not failure, a lack of effort is. A low standard of achievement resulting from best effort is success."

PŌWHIRI

A pōwhiri is an official welcome to our visitors. The tangatawhenua (people of the land) are welcoming the visitors.

If the visitors are from overseas then they are the manuhiri tūarangi. Each visitor is 'tapu' (sacred) and the pōwhiri is about lifting the tapu and making the visitors part of the school.

The pōwhiri starts with 'karanga' where the kuia (older women) call to the manuhiri, for them to come and enter the place where they are going to be welcomed. The visitors will karanga back to the tangatawhenua.

Usually, the visitors are challenged (wero) by a warrior with a taiaha (weapon) and a token of some sort (usually a small branch is laid down for the manuhiri). The manuhiri pick up the token, indicating they come in peace.

At school we do not do this, but the manuhiri are confronted with a haka pōwhiri. Once the manuhiri arrive into the whare, or onto the paepae (the place in front of the wharenui - meeting house), everyone stays standing until the haka pōwhiri is completed and a karakia (prayer) is given to bless the proceedings.

The speeches (whaikōrero) begin. In Waikato they have alternate speakers. Tangatawhenua speak first then manuhiri. The speakers alternate. After each speech a waiata (song) is sung, usually led by the kuia.

The last manuhiri speaker will lay down a koha for the tangatawhenua. This indicates to the tangatawhenua that they have no more speakers. The koha is accepted and thanks is given. The last speech of the pōwhiri is always made by the tangatawhenua. They must close the proceedings.

The tangatawhenua then invite the visitors to come forward and be welcomed personally with a hongi (touching of the noses).

Nga Kaiārahi: Guidance Counsellors

Our Guidance Counsellors are Mr P Heta, Mrs A Hyde and Miss E Pritchard. The Guidance Counsellors are located in Te Whaanau. If students, parents/caregivers and/or staff want to access the Guidance Counsellors during school hours, students can fill in a referral form and they will be seen. Students can also be referred by a teacher or a parent.

If our Guidance Counsellors cannot work with the student, students have access to other counsellors who we bring into school to support our students. If you wish to contact the Guidance Counsellors, please email p.heta@tuakaucollege.com.



Blessing of the ground for new classroom block *Te manaakitanga o te whenua mo te poraka akomanga hou*

On Monday 12 January 2026 we held a blessing of the ground for the new classroom block. A small piece of turf was lifted from the site. It will be kept and placed back in the ground when the area is completed. The large Ash tree was also blessed before it had to be removed.



TUAKAU COLLEGE BOARD *Tuhinga o mua*



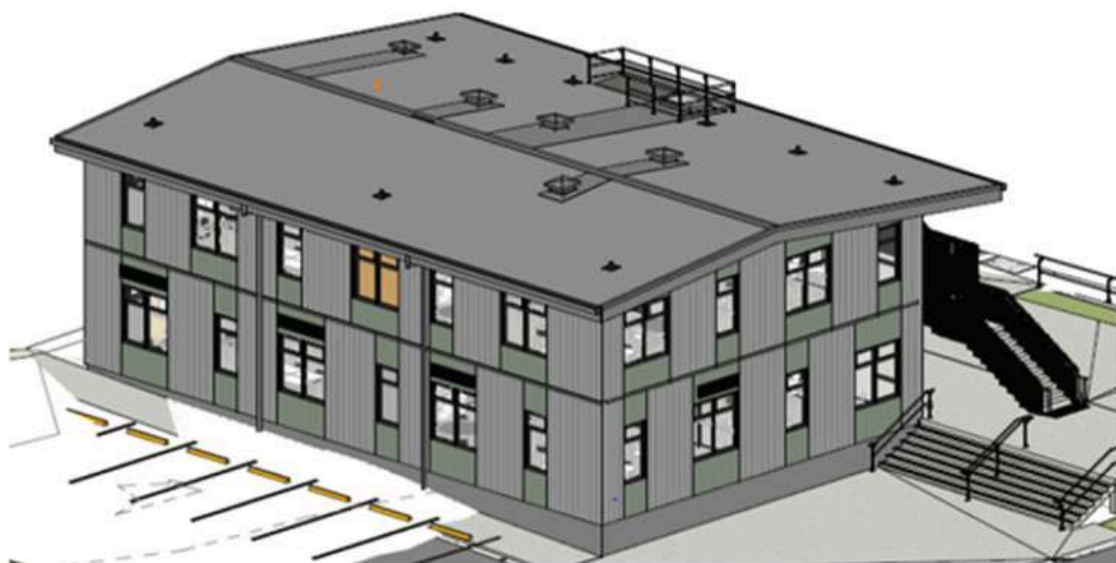
Every state and state-integrated school and kura in New Zealand has a board that governs it. The board is a Crown entity. The board's job is to see that everything that needs to be done gets done - legally, ethically, and as well as possible in the best interests of its students. It is also the employer of all staff, including the principal, and sets the overall strategic direction for the school or kura. The principal is the board's 'chief executive' and manages the school or kura in line with the board's direction and policies.

Tuakau College Board members for 2026: K Ngataki (Presiding Member), M McDowell (Deputy Presiding Member), M Preston, M Albert, E Jones, G Tema-Liapanekke, J Gussey, P Aislabie (Student Rep), H Warner (Staff Rep) and C Betty (Principal).

Board Meetings are held once a month. To contact the Tuakau College Board please email boardchair@class.tuakaucollege.com

2026 School bus bay/Elizabeth Street entrance changes *2026 Te kokoru pahi kura/Elizabeth Street nga huringa tomokanga*

As per the letter that was emailed to parents/caregivers on 9 December 2025, we are excited to let you know that over summer construction started on a new classroom block, which is being built to meet our current and future roll growth.



These changes include:

- **From Term 1 2026, the school bus drop off and pick up location will move to the carpark area on Buckland Road.** The new location for the bus bay will be at the Buckland Road entrance to the school. Lines are painted to indicate where people can and cannot park. The original bus bay located at the Elizabeth Street entrance to the school will no longer be in use for school buses.

All buses will turn left out of the Buckland Road entrance when they leave. We ask that all parents/caregivers collecting their children from school please do NOT drive in to the Buckland Road carpark/turnaround area to collect them. The bus area (carpark) on Buckland Road is for buses only from 8:30am – 9:00am and 2:45pm – 3:45pm each day. Please park outside on Buckland Road and your child(ren) can walk safely down to your vehicle using the provided footpath. Yellow lines mean NO PARKING. Please park on the left hand side of Buckland Road so students do not cross the busy Buckland Road.

- **Throughout construction, the oval car park/existing drop off at Elizabeth Street will be unavailable. Instead, we encourage students to be dropped off and picked up in Booker Drive, where a temporary access pathway to the school, adjacent to the reserve, will be available soon.**

If you are parking on Elizabeth Street and your child(ren) are walking down the street to your vehicle we ask that you please remind them to be respectful of the neighbours properties and not trespass. We also ask you, as parents/caregivers, to adhere to the council's road rules and not park where there are double yellow lines and/or over driveways.

- **A visitors car park (for short term visits ONLY) will be provided at the Elizabeth Street entrance. There will be 5 short-term visitor parks for parents to visit and attend appointments.**

There will still be access for visitors at the Elizabeth Street entrance to the school. Any visitors to the school are to come to the Elizabeth Street entrance to our kura and sign in. A permanent staff car parking and turnaround bay will be reinstated at the conclusion of the build.



We'll work closely with the contractor (G N Construction) and the Ministry of Education to ensure disruption to the school is kept to a minimum, including:

- The construction site will be fully fenced, ensuring a secure area for the build to take place – and for us to safely operate the school around the works.
- Construction access will be via Elizabeth Street, and site deliveries will be made outside of school start and finish times to keep traffic flowing around the area.
- While the contractors will do their best to keep noise and vibration to a minimum, there may be some disruption at times.

We will continue to update you if there are any further changes. Because this is a major change, please do not hesitate to contact the college.

If you have any questions about the project, please email the Executive Manager (Mr Moody) on p.moody@tuakaucollege.com

Thank you for your ongoing support of our growing school. We appreciate your cooperation and understanding in this matter.



2026 TIMETABLE INFORMATION

In 2026 school will start at 9am each day, except for Wednesdays when it will start at 9:10am.

The 10 minute Whaanau time is after Period 2 and before interval.
On Wednesday there will be no Whaanau time.

Assemblies and extended Whaanau time will occur during Period 4 on a Thursday, and these will be published in the Daily Notices ahead of time.

In 2026 school will finish at 3:15pm each day.

All teaching periods remain at 50 minutes each.
Interval is 25 minutes each day and lunch is 40 minutes each day.

Class	Monday, Tuesday, Thursday and Friday	Wednesday
Period 1	9:00am to 9:50am (50 mins)	9:10am to 10:00am (50 mins)
Period 2	9:50am to 10:40am (50 mins)	10:00am to 10:50am (50 mins)
Whaanau	10:40am to 10:50am (10 mins)	No Whaanau
Interval	10:50am to 11:15am (25 mins)	
Period 3	11:15am to 12:05pm (50 mins)	
Period 4	12:05pm to 12:55pm (50 mins)	
Lunch	12:55pm to 1:35pm (40 mins)	
Period 5	1:35pm to 2:25pm (50 mins)	
Period 6	2:25pm to 3:15pm (50 mins)	

Please note we will still run a '6 Day' timetable. This means instead of just referring to weekdays as Monday, Tuesday, etc. we also use days (eg. Day 1, Day 2, etc.) as per the timetable.

SCHOOL MAP 2026

Mahere Kura 2026



VISION:

Ka whakarite kareti o Tuakau i ngā ākonga kia whai tāna e tōmima nei, kia kōunga tonu tāna kete mātauranga. Tuakau College prepares students for life through a quality education promoting excellence in all things.

TUAKAU COLLEGE

STRATEGIC GOALS - TUAKAU COLLEGE WILL:

Whakawhānui i ngā whai wāhitanga te angitūtanga o ngā ākonga.

Maximise opportunities for student achievement.

Me ārahi i ngā whanaketanga o te rohe o te Ao hurihuri.

Lead local developments in a continuously changing world.

Kia noho hei manawa o te hapori kia hiahia te katoa.

Be the heart of the community where everyone wants to be.

MANAAKI, AROHA + WHAKAUTE
CARING, LOVE + RESPECT

He aha te mea nui o te Ao?
He tāngata, he tāngata, he tāngata.
What is the most important thing in the world?
It is people, it is people, it is people.

NGĀKAU TAPATAHI
INTEGRITY

Kaua e takahia te mana o te tāngata.
Do not trample on the mana of the people.

Ō TONGAREWA
PERSEVERANCE

Kaua e mate wheke mate mungoporo.
Don't give up like an octopus but fight like a hammerhead shark.

TINO PAI RAWA
EXCELLENCE

Pai rawa atu i ngā mea katoa.
The very best in all things.

TUAKAU COLLEGE

NO ACCESS TO THE SCHOOL VIA PADDOCKS

Kaore he urunga ki te kura ma nga paamu

There is no access to Tuakau College across the paddock from Jellicoe, Gibson Road, etc to Tuakau College. The paddock is a working farm and under the Health and Safety Act students should not be using this access. Signs indicating this are up. The land is leased and the leasers are concerned about students using this area, especially when cattle are in the paddock. They are liable for any incidents that occur in this area, hence access has to be denied.

Students **MUST** use Elizabeth Street to get to school. **Students are not to cut through any private properties.** Residents/the public could take action against students that do so.

SCHOOL INFORMATION

Koorero a Kura

ABSENCES: Leave a message on our 24-hour absentee line (09 236 8521 and press 2) or email attendance@tuakaucollege.com. Absence notes need to be signed by a parent and given to the student's Year Level Dean. Parents/caregivers may be contacted to confirm any unexplained absence.

ACCOUNTS OFFICE: The Accounts Office is open from 8.30am to 11:15am and 3pm to 3:30pm, from Monday to Friday. Queries can be directed to l.loosemore@tuakaucollege.com or 09 236 8521 ext. 114.

BUSES: All bus information can be found at www.franklintng.com. The network bus service is run by the Franklin Transport Network Group (schools who use the service) who contract Ritchies as its provider.

CONCERNS: If you have any concerns about your child's schooling, please contact your child's Year Level Dean in the first instance (see below). Please DO NOT try to contact a member of the Senior Leadership Team (SLT) or the Principal first. The Dean will refer you to a member of the SLT if this needs to happen. Please follow the communication steps and process we have in place to ensure things are dealt with as smoothly as possible.

Year 7 - Mrs Mistry (p.mistry@tuakaucollege.com)

Year 8 - Ms Sharma (a.sharma@tuakaucollege.com)

Year 9 - Mr Collins (m.collins@tuakaucollege.com)

Year 10 - Mrs Hume (k.hume@tuakaucollege.com)

Year 11 - Ms Wilton (j.wilton@tuakaucollege.com)

Year 12 - Mrs Carter (j.carter@tuakaucollege.com)

Year 13 - Mrs McMillan (m.mcmillan@tuakaucollege.com)



CONTACT DETAILS: Please keep us updated with your student(s) contact details by contacting Mrs Potts on 236 8521 ext. 105 or by emailing t.potts@tuakaucollege.com. It is important that these details are kept up to date in case of an emergency.

FEES AND SCHOOL TRIP PAYMENTS: School fees can be paid at the Accounts Office. The Accounts Office is located on the school side of the Admin Block (by the Nurse's Office). You can set up an automatic payment scheme by contacting Mrs L Loosemore on l.loosemore@tuakaucollege.com.

HEALTH CENTRE: We have registered Nurses rostered on at our Health Centre (236 8521 ext. 155). In an emergency, parents will be contacted as soon as possible. If immediate attention is required, the student will be taken to the nearest Medical Centre. Please do not send your child to school if they are unwell as this compromises the health of other students and staff. Please make sure you keep your school contact details updated so we can contact you quickly and easily. If you receive a text from your child saying they are unwell, please do not come immediately to school! Please ask them to follow the correct procedure which is to advise their teacher and request a note to see the nurse. The nurse will assess the student and then contact you if they need to go home.

CANTEEN: We have an onsite canteen selling food and refreshments at interval and lunchtime.

LEAVE: Any long term student leave during term time must be requested by the parent/caregiver in writing to the Principal or the Principal's PA (j.paton@tuakaucollege.com), prior to the leave being taken. We discourage parents/caregivers taking holidays/leave during the term time because it may impact the educational outcomes for that student. The Principal can only approve leave for up to five days. The decision to withdraw a student during term time is the parent/caregiver's responsibility. Taking leave of this kind will impact the students attendance percentage.

E-BULLETIN/NEWSLETTER: The e-Bulletin will be emailed/issued to caregivers once a month and will also be available online at www.tuakaucollege.com. Daily school notices are read in Whaanau class.

HEALTHY SCHOOL LUNCH PROGRAMME: Tuakau College is part of the governments Healthy School Lunch programme which provides all students with free lunch everyday at interval. Meals will be prepared to cater for children with specific allergies or cultural requirements. If you need these options, please make the school aware by emailing Mr P Moody on p.moody@tuakaucollege.com.

WEBSITE AND SOCIAL MEDIA: Our website is www.tuakaucollege.com. We are also on Facebook under 'Tuakau College' and on Instagram under '@tuakau.college.nz.' If your child has done/achieved something outside of school, please email information and photos to j.paton@tuakaucollege.com

UNIFORM: We are a uniform school. Correct uniform to be worn at all times. Plain black shoes only - sandals must be flat sandals with a strap over the heel. Uniform information is on the Tuakau College website and the poster below. Stockists are The Uniform Shoppe, located at 7A, Glasgow Road, Pukekohe or www.theuniformshoppe.co.nz. Phone: 09 239 1310. Shop hours are Monday to Thursday: 8:30am to 5pm and on Saturday: 9am to 1pm. WINZ quotes can be done via their website or instore.

SCHOOL UNIFORM



TUAKAU COLLEGE

Pai rawa atu i nga mea katoa | The very best in all things

Blouse	Year 7-10 Regulation Junior Blouse. Year 11-13 Regulation Senior Blouse.
Shirt	Year 7-10 Regulation Junior Shirt. Year 11-13 Regulation Senior Shirt.
Jersey/Vest	Regulation School Jersey (optional) or Vest (optional) when available from Uniform Shoppe.
Skirt	Regulation knee or ankle length skirt.
Tupenu (Lavalava)	Regulation Tupenu.
Shorts	Regulation school shorts. Waistband must be above hips. Hems must be above or on the knee. Belts may be black.
Trousers (Dress Uniform – optional)	Regulation school trousers. Waistband must be above hips. To be worn with shoes and black socks. No sandals to be worn with long trousers.
Jackets	Regulation softshell jacket (optional).
Blazer (Dress Uniform – optional)	Regulation blazer (optional).
Socks/Stockings	Calf length plain black socks or plain (not ribbed or patterned) black stockings may be worn.
Footwear	Plain black shoes only. Sandals must be plain black, flat sandals with straps over heel, worn as designed and in a neat and tidy condition. No socks to be worn with sandals. For Health and Safety reasons, covered shoes MUST always be worn in Technology rooms and sometimes in Science practical's.
PE/House Activity Uniform	Regulation T-shirt in house colour to be worn with plain black shorts.
Tie (Dress Uniform – optional)	Regulation school tie (optional).

Jewellery	NO jewellery to be worn other than the following: plain ear studs or plain sleeper earrings (maximum of 2 per ear. Sleepers must be a maximum of 12mm in diameter and be able to rotate 360 degrees through the ear). A wrist watch. One piece of jewellery of cultural, religious, or personal significance to be worn around the wrist or neck. Medic-Alert bracelets. One small plain nose stud. NO facial piercings. NO ear lobe expanders/stretchers. Maximum size for spacers is 1cm. One ring on finger. Culturally significant earrings may be worn at special occasions only but students <u>must</u> seek approval from an SLT member prior to the occasion.
School Cap (optional)	Plain black cap or hat (NO writing or brands and NO beanies) may be worn outside only for sun protection. Cap peaks to be worn to the front only.
Religious/Cultural Headwear	Plain black.
Scarf (optional)	Plain black scarf.
Hair	Students' hair must be clean and tidy at all times. NO extremes of fashion acceptable. Dyed hair must be of a natural colour that someone could be born with. Facial hair must be kept groomed at all times. All students with long hair will be required to tie it back in classes where health and/or safety is an issue e.g. Technology classes.
Under Garments	Plain undergarments may be worn. They must not be visible through the school shirt, below the length of the skirt or below the sleeves.
Sunglasses	Sunglasses may be worn outside only and are the responsibility of the student. Sunglasses are not permitted to be worn on the head in class.
Nail Varnish	Clear, transparent or natural colours only. NO solid colours permitted.
Make Up	NO obvious makeup permitted.
Tattoos	The tattooing of young people of school age is strongly discouraged, however they may be accepted on students over 16 years old and should be limited to a significantly appropriate tattoo. If a student has an inappropriate tattoo it must be covered. Unacceptable tattoos include, but are not limited to; drugs, alcohol, gang affiliations, death and sexually explicit.

**UNIFORM IS AVAILABLE FROM
The Uniform Shoppe and SAS Sport**

Located at 5B Glasgow Road, Pukekohe 2120.
Phone: 09 239 1310
Shop hours are Monday to Thursday: 8:30am to 5pm and
Saturday: 9am to 1pm
Website: www.theuniformshoppe.co.nz



Tuakau College **PHONE FREE**

***Ka whakakorengia Te Kāreti o Tūākau
te whakamahinga o ngā waea Pūkoro***



Since February 2023, the Board decided that student mobile phone/ear pods use at school between the hours of 9:00am to 3:15pm is not permitted. This is also now a nationwide requirement, set by the government, for all schools.

What will happen if a student has their mobile phone/ear pods out at school during this time?

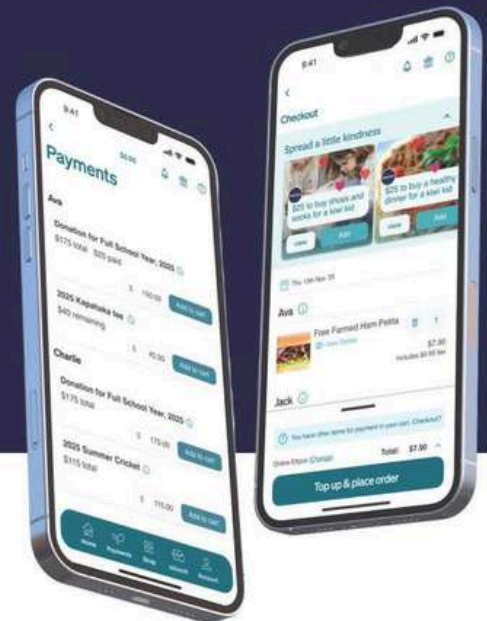
1. The staff will ask for the phone/ear pods.
2. The phone/ear pods will be confiscated.
3. The phone/ear buds will be placed into a plastic bag.
4. The student's name will be written on the label and the condition of the phone/ear buds will be recorded.
5. The staff will deliver the phone/ear buds to the Student Centre.
6. The Student Centre will record the confiscation on KAMAR.
7. The phone/ear buds will be locked in a cabinet for safe keeping
8. Students can pick up their phone/ear buds at the end of the day after 3:15pm.
9. If a second confiscation occurs then the parents/caregivers will be contacted and they will have to come in and pick the phone/ear buds up at the end of the day, or when it is convenient for them to do so.
10. A third confiscation will result in the student being referred to the Dean and discipline taken against the student for continual disobedience. The phone/ear buds are not the issue; the disregard for the school rules is the issue.

kindo.

Making School Payments Simple

One Account. All Your Schools

Whether you're new to Kindo or already using it, managing school payments is easy.



New to Kindo?

- Scan the QR code to create your account
- Enter your details and add your student (s)
- Browse the school shop, purchase and check out.

Already have a Kindo account?

- Log in to your Kindo account
- Navigate to 'My Details'
- Select your student and add membership
- Select new organisation from the dropdown list
- Browse the school menu, add items to your cart, and check out.



Please Note:

Don't complete set up until the new school year starts!



Have questions?

Our friendly team is here for you.

0508 4 KINDO (0508 454 636)

hello@mykindo.co.nz

Respecting school grounds *Te whakaute i te papa o te kura*



A friendly reminder that there are rules that apply to school grounds. There are policies in place that outline no smoking and/or vaping on school grounds and no dogs on school grounds. These policies can be found on SchoolDocs (link and password found on our website) and these policies apply at any sports games played on school grounds too. We appreciate your understanding and respect for our school grounds in this.

Process for raising problems and concerns with the school *Te tukanga mo te whakaputa raruraru me nga awangawanga ki te kura*

We understand that from time to time parents/caregivers will have problems/concerns that they will want the school to know about. Tuakau College has a process in place for this to happen. Please understand that parents/caregivers are not usually able to go straight to the Principal about an issue.

The first step in raising a problem/concern about your child(ren) is to speak to their Year Level Dean. If students do not know who their Year Level Dean is then there is a list on our website with their contact details. Once you have spoken to the Year Level Dean about the problem/issue they will follow it up/investigate further. If the Dean identifies that the problem/issue needs to be escalated to a higher level they will then refer it to a member of the Senior Leadership Team (SLT). The SLT will then investigate the problem further. The Principal will be involved if an SLT member refers the problem on to him.

It is important to note that if we do not know about the problem we are unable to help you. Sometimes we get parents/caregivers call telling us about an issue/problem that is serious that we could have prevented if they had told the Dean about it in the first instance. We appreciate your understanding in this process!

More information about the complaints process can be found on our website, by logging on to SchoolDocs (<https://tuakaucollege.schooldocs.co.nz/index.htm> - link and password for this can be found on the Tuakau College website).

Stand Downs and Suspensions *Tu ki raro me te Whakatarewa*

Sometimes students at school are 'stood down' or 'suspended' and below is some information about what this means. A stand down is the formal removal of a student from school by the Principal for a specified period. Stand downs can be no more than five school days in a term or ten school days in a year. A stand down is usually anywhere from 1 - 5 days in length depending on the reason. While on stand down students are not allowed on or around the school grounds, nor are they permitted to attend any sports practices, games, socials or other school activities.

A suspension is the formal removal of a student from a school by the Principal until the Board decides the outcome of the suspension at a suspension meeting. At a suspension meeting the Board can decide to:

- a) Lift the suspension without conditions or
- b) Lift the suspension with reasonable conditions imposed or
- c) Extend the suspension with reasonable conditions imposed or
- d) exclude (if the student is under 16 years of age) or expel the student (if the student is over 16 years of age)

These are serious consequences and not what we want for our students, however all actions have consequences and unfortunately sometimes these are the consequences.

Attendance Codes *Waehere Haerenga*



Please note that if you call the school to let us know that your child will be absent, it is important you also provide a reason for your child being absent. Within the absence attendance code, there are different codes for the absence (depending on if the student is sick, on holiday, at a funeral/tangi, etc).

Please don't call the school and leave a message only saying your child is absent. Rather, please state they are absent and the reason for their absence. If you do not provide a reason for the absence it may be coded as 'Unjustified.'

This is particularly important if your child is playing a school sport or wants to attend the Ball, etc. where there is an attendance requirement. By providing a reason for the absence it makes things a lot smoother in the long run. We really appreciate your help in this!

Tuakau College ADMIN STAFF

We would like to introduce to you our Administration/Support staff team that you may likely have interactions with when you visit Tuakau College.

Mrs T.
Potts

Enrolments + KAMAR Manager
+ Admin Receptionist
t.potts@tuakaucollege.com



Mrs S.
Pearson

Student Centre Receptionist
s.pearson@tuakaucollege.com



Mrs L.
Loosemore

Accounts Office Administrator
lloosemore@tuakaucollege.com



Mrs J.
Stacey

Accounts Office Assistant
n.currie@tuakaucollege.com



Ms N.
Currie

iHub Manager
n.currie@tuakaucollege.com



Mrs S.
Smeeton

Payroll
s.smeeton@tuakaucollege.com



Miss J.
Paton

Principal's PA +
Digital Media Producer
j.paton@tuakaucollege.com



 To contact
the school

please call 09 236 8521
during office hours.





BYOD (Bring Your Own Device)

Tuakau College started launching BYOD (Bring Your Own Device) in 2022, starting with Year 7 and phased in Year 8 and Year 9 in 2023 and then the entire school in 2024.

Every student MUST have a device.

Our BYOD requirements are:

- a minimum of a Chromebook (a phone is not a device for BYOD)
- Device must have a keyboard
- Minimum 10.5" screen
- Must hold approx. 5 hours of charge
- Case for the device to protect it from damage

We have signed up with Noel Leeming to get best deals available.
Any further questions please contact a.jacobs@tuakaucollege.com
or regarding loan devices please contact n.currie@tuakaucollege.com



VISION:

Ka whakarite kareti o Tuakau i ngā ākonga kia whai tāna e tōmina nei, kia kōunga tonu tana kete mātauranga.

Tuakau College prepares students for life through a quality education promoting excellence in all things.



STRATEGIC GOALS - TUAKAU COLLEGE WILL:

Whakawhānui i ngā whai wāhitanga te angitūtanga o ngā ākonga.

Maximise opportunities for student achievement.

Me ārahi i ngā whanaketanga o te rohe o te Ao hurihuri.

Lead local developments in a continuously changing world.

Kia noho hei manawa o te hapori kia hiahia te katoa.

Be the heart of the community where everyone wants to be.



Maximise Opportunities for student Achievement

Achievement in all areas is improved through positive engagement in learning and with the appropriate support.

Continue to build and implement the use of Te Reo Māori in all areas and aspects of the College.

Literacy and Numeracy continues to be embedded as the foundation for each student to increase achievement.

Develop and implement the new Curricula in all areas to ensure maximum benefit for all student achievement.

To continue to develop an achievement pathway for all students



Local Educational Development

Local Tūākau contexts are developed in all units of work as new curricular is implemented.

BYOD is prevalent in all classrooms to enhance teaching and learning.

Professional development for all staff is used to support the changes taking place.

Develop local initiatives to enhance staff and student wellbeing.

Maanakitanga and Kaitiakitanga are intertwined in all the work carried out.



Be the heart of the community

Continue to focus on the having consistent practices in all areas.

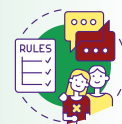
Communicating to all areas key to ensure mahi tahi, collaboration is prevalent.

Strengthen a safe emotional and physical learning environment.

Continue to give credence to Te Tiriti o Waitangi.

Continue to develop and adhere to good practises where people come first.

School Expectations and Rules *Nga Tirohanga Kura me nga Ture*



At our kura we have expectations for our students and it is important to us that these are upheld.

Below is a reminder of some of those standards. We appreciate your support as parents/caregivers in ensuring our tamariki are aware of these and are upholding them. It takes a village.

Our expectations are as follows:

Attendance

- By law students must attend school up to 16 years old and after that whilst they are enrolled at school
- Students must arrive at school on time. On everyday except Wednesday students MUST be at school by 9:00am and on Wednesday 9:10am. Students will be issued lunchtime detentions.
- Students must attend all classes
- Students must be on time to all classes
- If students are away the school must know - please contact the school

Uniform

- We are a uniform school
- Uniform must be worn appropriately every day
- Any non-uniform items may be confiscated and collected at the end of the day

Phone free school

- This government has enforced that mobile phones cannot be used at school by students
- Students cannot use a mobile phone during when the school is opened for instruction. If they are used they will be confiscated and can be collected at the end of the day.

Vape free school

- Tuakau College is a vape free, smoke free, drug free school. Vaping, smoking and using illegal drugs at school, in class is totally unacceptable and will be dealt with seriously.

School Values: Caring Love Respect

- This means that swearing, the use of foul language, making derogatory comments, racial slurs, gender based slurs, etc. at anytime is totally unacceptable.
- Being respectful to your fellow students and the staff is expected.
- Tuakau College staff give reasonable instructions and requests to students, so therefore students must do as they are told.

Bus Students

- Must have their cards to access the Tuakau College buses.
- Good behaviour on any bus is expected.
- When students arrive at school they MUST stay on the school grounds - this is a safety issue as you as parents/caregivers expect your child to be here.

School work

- Students must complete the work set in class
- Students must follow instructions from the teacher
- Disruptive behaviour will not be tolerated

Please assist us by talking to your child(ren) about these expectations. We appreciate your support in this.

Calendar Maaramataka

for Term 1 2026

*PLEASE BE AWARE THAT THESE ARE INDICATIVE AND COULD CHANGE

A 'WEEK AHEAD' IS POSTED ON OUR SOCIAL MEDIA PAGES EACH SUNDAY WITH UP TO DATE INFORMATION FOR THE WEEK AHEAD.

MON	TUE	WED	THU	FRI	SAT	SUN
26 JAN Auckland Anniversary (Public Holiday)	27 Staff Only Day	28 Staff Only Day	29 Course Confirmation	30 Course Confirmation	31	1 FEB
2 New Students Day	3 Whole school starts Rounders Competition	4 Day 1 Timetable starts	5 Day 2	6 Waitangi Day (Public Holiday)	7	8
9 Day 3	10 Day 4	11 Day 5	12 Day 6	13 Athletics Day	14	15
16 Day 1	17 Day 2	18 Day 3	19 Day 4	20 Day 5 Swimming Champs	21	22
23 Day 6 Year 7 Camp	24 Day 1 Year 7 Camp Board Meeting	25 Day 2 Year 7 Camp	26 Day 3	27 Day 4 Swimming Tabloids	28	1 MAR
2 Day 4	3 Day 5 PhotoLife ID Photos	4 Day 6	5 Day 1	6 Day 2	7	8
9 Day 3	10 Day 4	11 Day 5	12 Day 6	13 Day 1	14	15
16 Day 2	17 Day 3	18 Day 4 Polyfest - Diversity and Pasifika Stages	19 Day 5 Polyfest - Diversity and Pasifika Stages	20 Day 6 Polyfest - Diversity and Pasifika Stages	21 Polyfest - Diversity and Pasifika Stages	22 Waka Ama Nationals
23 Day 1 Waka Ama Nationals	24 Day 2 Waka Ama Nationals	25 Day 3 Waka Ama Nationals	26 Day 4 Waka Ama Nationals	27 Day 5 Waka Ama Nationals	28	29
30 Day 6	31 Day 1 Board Meeting	1 APR Day 2	2 Day 3 Term 1 Ends	3 Good Friday (Public Holiday)	4	5