



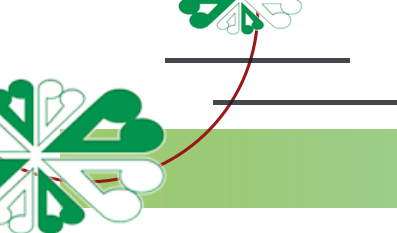
TUAKAU COLLEGE

Pai rawa atu i nga mea katoa | The very best in all things

ENROLMENT INFORMATION

2027





ENROLMENT FORMS

All enrolment forms can be completed online at the Tuakau College website on the KAMAR Portal (visit www.tuakaucollege.com/enrolment to access)

SCHOOL UNIFORM

Uniform is available from the stockist below. Enquiries to Mrs Fletcher (Deputy Principal) on 236 8521 ext. 107

SAS Uniforms, 7A Glasgow Road, Pukekohe

Phone: 09 239 1310

Monday to Thursday from 8:30am - 5:00pm, Saturday from 9:00am - 1:00pm (Friday and Sunday closed)

SCHOOL BUSES

We belong to the Franklin Transport Network Group (<https://www.franklintng.com/bus-routes>). A Transport Entitlement Zone (TEZ) determines student eligibility for transport to and from school.

Some bus services incur a charge for ineligible students. For more information on pricing and bus tickets/cards please check with the Accounts Office by emailing accounts@tuakaucollege.com or the Bus Controller by emailing j.stacey@tuakaucollege.com

CONTACT DETAILS

Please advise the Student Database Administrator of any changes to your contact details by emailing t.potts@tuakaucollege.com, or phoning 236 8521 ext. 105.

FEES (SEE FEES SCHEDULE)

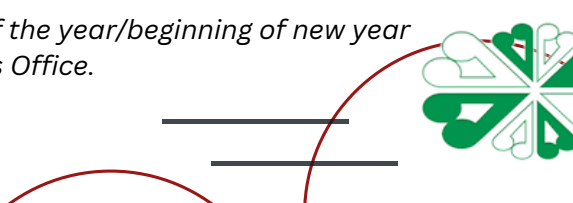
Subject Fees - Invoices are sent out.

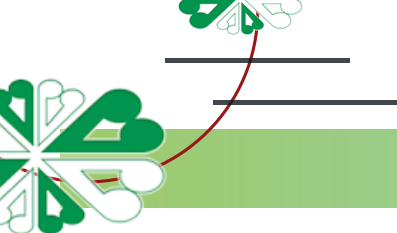
Textbooks - Issued free of charge. Payment is required for loss or damage.

Stationery - Stationery lists are uploaded to the school website (under 'Key Information') at the end of the year.

Sports Fees - Fees due prior to sports participation. *See Fees Schedule

**The Fees Schedule is emailed to parents/caregivers at the end of the year/beginning of new year and are also available from the Accounts Office.*





2027 TERM DATES

School Office and Student Centre Opens: 20 January 2027
Year 11 - 13 Course Confirmation Days: 27 - 28 January 2027
Powhiri and New Students Day: 29 January 2027
Whole School Starts: 2 February 2027

Term 1: 29 January 2027 - Friday 9 April 2027
Term 2: Tuesday 27 April 2027 - Friday 2 July 2027
Term 3: Monday 19 July 2027 - Friday 24 September 2027
Term 4: Monday 11 October 2027 - TBC

PUBLIC HOLIDAYS 2027

Auckland Anniversary - Monday 1 February, 2027
Waitangi Day - Monday 8 February, 2027
Good Friday - Friday 26 March, 2027
Easter Monday - Monday 29 March, 2027
ANZAC Day - Monday 26 April, 2027
King's Birthday - Monday 7 June, 2027
Matariki - Friday 25 June, 2027
Labour Day - Monday 25 October, 2027
Christmas Day - Monday 27 December, 2027
Boxing Day - Tuesday 28 December, 2027

ABSCENCES AND LEAVE

If a student is absent from school for any reason, please email attendance@tuakaucollege.com or leave a message on the 24 hour absentee line (236 8521 dial 2). If absent for more than 3 days, you are required to send in a medical note to the student's Dean.

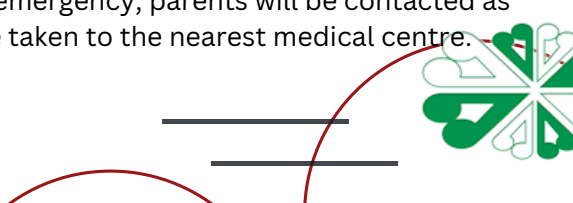
If you intend taking your child out of school on holiday or other leave during term time, you must request this in advance in writing to the Principal and check with the child's Dean and teachers to ensure they are not missing any assessments or exams.

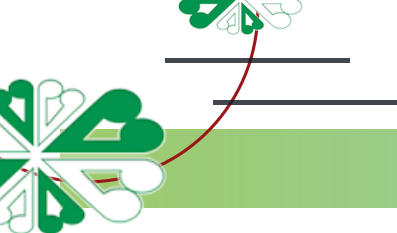
ASSEMBLIES AND PRIZEGIVINGS

Assemblies are held regularly throughout each term. Junior, Middle and Senior College prizegivings, Matariki Awards and a Sports Awards evening are held at the end of school year.

HEALTH CENTRE

The school has three part-time Registered Nurses that work on site. In an emergency, parents will be contacted as soon as possible. If immediate attention is required, the student will be taken to the nearest medical centre.





STAFF EMAILS

Staff emails are firstnameinitial.surname@tuakaucollege.com (e.g. s.smith@tuakaucollege.com).
A list is on our website at <https://www.tuakaucollege.com/staff-contacts>

DEANS

Each year level has a Dean allocated. Please contact your child's year level Dean if you have any pastoral issues or concerns. (<https://www.tuakaucollege.com/staff-contacts>)

NEWS AND NOTICES

Please see our website www.tuakaucollege.com or link to our Tuakau College Facebook Page and/or Instagram Page for school news and events. A KAMAR Parent Portal is also available.

Our monthly e-Bulletin newsletter (Korero) is emailed to all parents/caregivers.

Daily notices are read out to Whaanau (form) classes and available on the KAMAR Portal that both students and parents/caregivers have access to.

TUAKAU COLLEGE BOARD

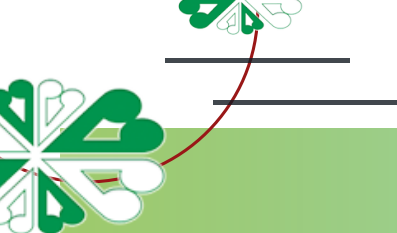
The Tuakau College Board meets on the last Tuesday of each month. Trustee elections are held every 18 months. Student trustee elections are held annually in September.

REPORTING

School reports are issued four times during the school year. Parents and caregivers are encouraged to support their child through Academic Conferencing which assists students to identify goals and ways to achieve them and for older students help identify possible career choices.

Parent/student/teacher interviews are held once yearly.





TUAKAU COLLEGE SCHOOL (106) ENROLMENT SCHEME

EFFECTIVE FROM 1 FEBRUARY 2018

The guidelines for development and operation of enrolment schemes are issued under section 11G (3) of the Education Act 1989 for the purpose of describing the basis on which the Secretary's powers in relation to enrolment schemes will be exercised.

Home Zone

All students who live within the home zone described below and shown on the map overleaf shall be entitled to enrol at the school.

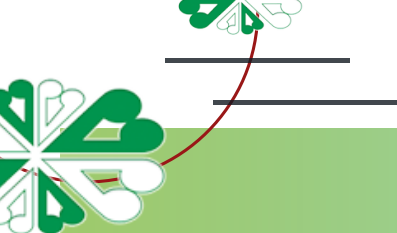
The enrolment scheme home zone includes:

- *State Highway 1 (SH1) between Nikau Road and Oram Road,*
 - *Includes Razorback Road (addresses 270, 285 and above), Jimeda Road, Pirrit Road, Nikau Road and Oram Road, roads in Pokeno township,*
- *State Highway 2 (SH2) between SH1 and Rawiri Road,*
 - *Includes SH2 off roads, Rimu Road, McMillan Road, Pinnacle Hill Road (odd addresses 7-133 and even addresses 8-120 included), Graham Road, Brjevich Road, Moon Ridge Close, Paparimu Road (addresses 700 and above), Twining Road, Mangatawhiri Road and off roads included, Buckingham Road, Caie Road, Bell Road, Jeff Road, Golf Road and Rawiri Road. Mangatangi Road excluded.*
- *Koheroa Road and off roads between SH2 to and SH1,*
- *Roads between Mercer and Pukekawa,*
 - *Mercer Ferry Road, Morrison Road, Clark & Denize Road, Native Road, Geraghty Road,*
- *Roads between Pukekawa and Tuakau,*
 - *Includes Old Highway 22 (addresses 765, 762 and below included), Hunt Road (addresses 69 and below), Murray Road, Mile Bush Road, Onewhero Tuakau Bridge Road (addresses 92 and below included), Tuakau Bridge – Port Waikato Road (addresses 616 and below included), River Road and off roads,*
- *Buckland Road (addresses 2026, 1999 and above included), off roads included, Cameron Town Road and Tuakau Road excluded.*
- *George Street and off roads,*
- *Harrisville Road between Tuakau and Jericho Road*
 - *Harrisville Road (even addresses 406, odd addresses 389 and below included) and off-roads, Bovill Way, Gordon Paul Place, Ruebe Road, Jericho Road (addresses 223, 228 and above included), Buckville Road excluded,*
- *Whangarata Road and Ridge Road between Tuakau and SH1,*
 - *Includes off roads and Pokeno Road*

All residential addresses on included sides of boundary roads and all no exit roads off included sides of boundary roads are included in the zone unless otherwise stated.

Proof of residence within the home zone will be required.





TUAKAU COLLEGE SCHOOL (106) ENROLMENT SCHEME

EFFECTIVE FROM 1 FEBRUARY 2018

Each year, applications for enrolment in the following year from in-zone students will be sought by a date which will be published in a daily or community newspaper circulating in the area served by the school. This will enable the board to assess the number of places which can be made available to students who live outside the home zone.

Special Programmes

This priority category is not applicable at this school because the school does not run a Special programme approved by the Secretary.

Out of Zone Enrolments

Each year the board will determine the number of places which are likely to be available in the following year for the enrolment of students who live outside the home zone. The board will publish this information by notice in a daily or community newspaper circulating in the area served by the school. The notice will indicate how applications are to be made and will specify a date by which all applications must be received.

Applications for enrolment will be processed in the following order of priority:

First Priority This priority category is not applicable at this school because the school does not run a special programme approved by the Secretary

Second Priority will be given to applicants who are siblings of current students.

Third Priority will be given to applicants who are siblings of former students.

Fourth Priority will be given to any applicant who is a child of a former student of the school.

Fifth Priority will be given to any applicant who is either a child of an employee of the board of the school or a child of a member of the board of the school.

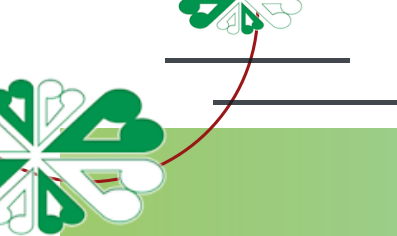
Sixth Priority will be given to all other applicants.

If there are more applicants in the second, third, fourth, or fifth priority groups than there are places available, selection within the priority group will be by a ballot conducted in accordance with instructions issued by the Secretary under Section 11G(1) of the Education Act 1989. Parents will be informed of the date of any ballot by notice in a daily or community newspaper circulating in the area served by the school.

Applicants seeking second or third priority status may be required to give proof of a sibling relationship.

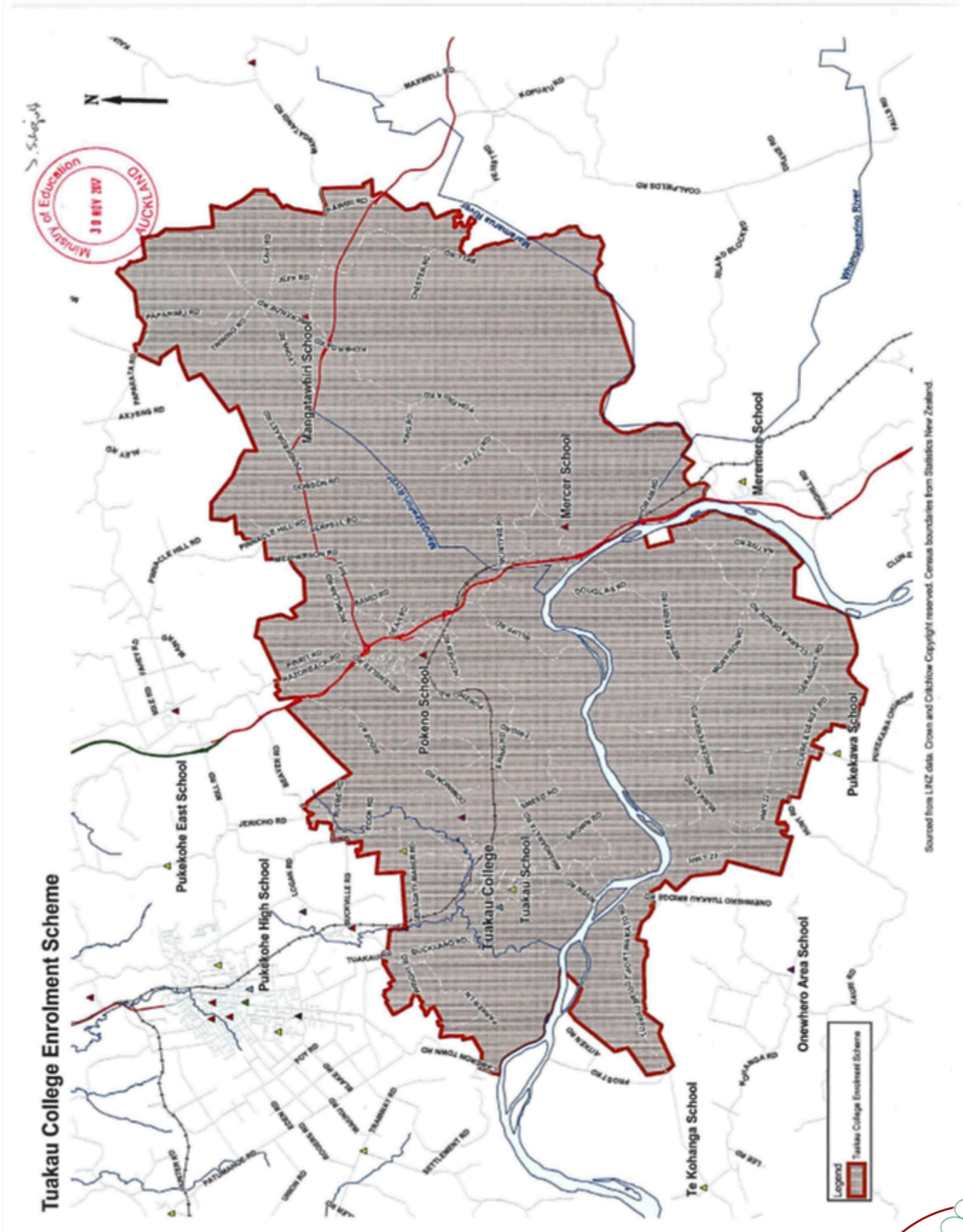
Continued on next page. .





TUAKAU COLLEGE SCHOOL (106) ENROLMENT SCHEME

EFFECTIVE FROM 1 FEBRUARY 2018



SCHOOL UNIFORM



TUAKAU COLLEGE

Pai rawa atu i nga mea katoa | The very best in all things

Blouse	Year 7-10 Regulation Junior Blouse. Year 11-13 Regulation Senior Blouse.
Shirt	Year 7-10 Regulation Junior Shirt. Year 11-13 Regulation Senior Shirt.
Jersey/Vest	Regulation School Jersey (optional) or Vest (optional) when available from Uniform Shoppe.
Skirt	Regulation knee or ankle length skirt.
Tupenu (Lavalava)	Regulation Tupenu.
Shorts	Regulation school shorts. Waistband must be above hips. Hems must be above or on the knee. Belts may be black.
Trousers (Dress Uniform – optional)	Regulation school trousers. Waistband must be above hips. To be worn with shoes and black socks. No sandals to be worn with long trousers.
Jackets	Regulation softshell jacket (optional).
Blazer (Dress Uniform – optional)	Regulation blazer (optional).
Socks/Stockings	Calf length plain black socks or plain (not ribbed or patterned) black stockings may be worn.
Footwear	Plain black shoes only. Sandals must be plain black, flat sandals with straps over heel, worn as designed and in a neat and tidy condition. No socks to be worn with sandals. For Health and Safety reasons, covered shoes MUST always be worn in Technology rooms and sometimes in Science practical's.
PE/House Activity Uniform	Regulation T-shirt in house colour to be worn with plain black shorts.
Tie (Dress Uniform – optional)	Regulation school tie (optional).

Jewellery	NO jewellery to be worn other than the following: plain ear studs or plain sleeper earrings (maximum of 2 per ear. Sleepers must be a maximum of 12mm in diameter and be able to rotate 360 degrees through the ear). A wrist watch. One piece of jewellery of cultural, religious, or personal significance to be worn around the wrist or neck. Medic-Alert bracelets. One small plain nose stud. NO facial piercings. NO ear lobe expanders/stretchers. Maximum size for spacers is 1cm. One ring on finger. Culturally significant earrings may be worn at special occasions only but students <u>must</u> seek approval from an SLT member prior to the occasion.
School Cap (optional)	Plain black cap or hat (NO writing or brands and NO beanies) may be worn outside only for sun protection. Cap peaks to be worn to the front only.
Religious/Cultural Headwear	Plain black.
Scarf (optional)	Plain black scarf.
Hair	Students' hair must be clean and tidy at all times. NO extremes of fashion acceptable. Dyed hair must be of a natural colour that someone could be born with. Facial hair must be kept groomed at all times. All students with long hair will be required to tie it back in classes where health and/or safety is an issue e.g. Technology classes.
Under Garments	Plain undergarments may be worn. They must not be visible through the school shirt, below the length of the skirt or below the sleeves.
Sunglasses	Sunglasses may be worn outside only and are the responsibility of the student. Sunglasses are not permitted to be worn on the head in class.
Nail Varnish	Clear, transparent or natural colours only. NO solid colours permitted.
Make Up	NO obvious makeup permitted.
Tattoos	The tattooing of young people of school age is strongly discouraged, however they may be accepted on students over 16 years old and should be limited to a significantly appropriate tattoo. If a student has an inappropriate tattoo it must be covered. Unacceptable tattoos include, but are not limited to; drugs, alcohol, gang affiliations, death and sexually explicit.

UNIFORM IS AVAILABLE FROM The Uniform Shoppe and SAS Sport

Located at 5B Glasgow Road, Pukekohe 2120.
Phone: 09 239 1310
Shop hours are Monday to Friday: 8:30 to 5pm and
Saturday: 9am to 1pm
Website: www.theuniformshoppe.co.nz

